

itl boulder

THE LIGHT CENTER OF THE INDUSTRY SINCE 1955

INDEPENDENT TESTING LABORATORIES, INC.
3386 LONGHORN ROAD, BOULDER, CO 80302 USA

PHONE: (303)442-1255 • FAX: (303)449-5274 • E-MAIL: itl@itlboulder.com • WEBSITE: www.itlboulder.com

REPORT NUMBER: ITL61321

DATE: 11/18/08

PREPARED FOR: SCOTT ARCHITECTURAL LIGHTING

LUMINAIRE: FABRICATED WHITE PAINTED METAL MOUNTING PLATE/REFLECTOR, TRANSLUCENT WHITE FROSTED PLASTIC DIFFUSER IN FABRICATED WHITE PAINTED METAL FRAME/TRIM, OPEN TOP AND BOTTOM, DIFFUSER FROSTED SIDE OUT. BALLAST IS EXPOSED AND CENTERED OFFSET TOWARDS BOTTOM OF OPTICAL COMPARTMENT.

LAMP: ONE 27-WATT SINGLE ENDED TWIN TUBE COMPACT FLUORESCENT, SYLVANIA FT24DL/841, VERTICAL BASE-DOWN POSITION.

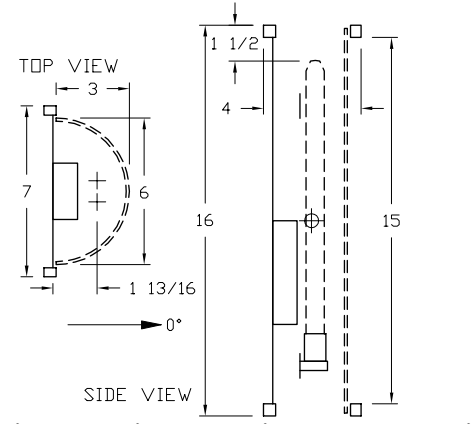
BALLAST: ROBERTSON PSM226CQMVDSW

MOUNTING: WALL

TOTAL REFLECTANCE OF PAINT = 86.9 %

TOTAL INPUT WATTS = 22.6 AT 120.0 VOLTS

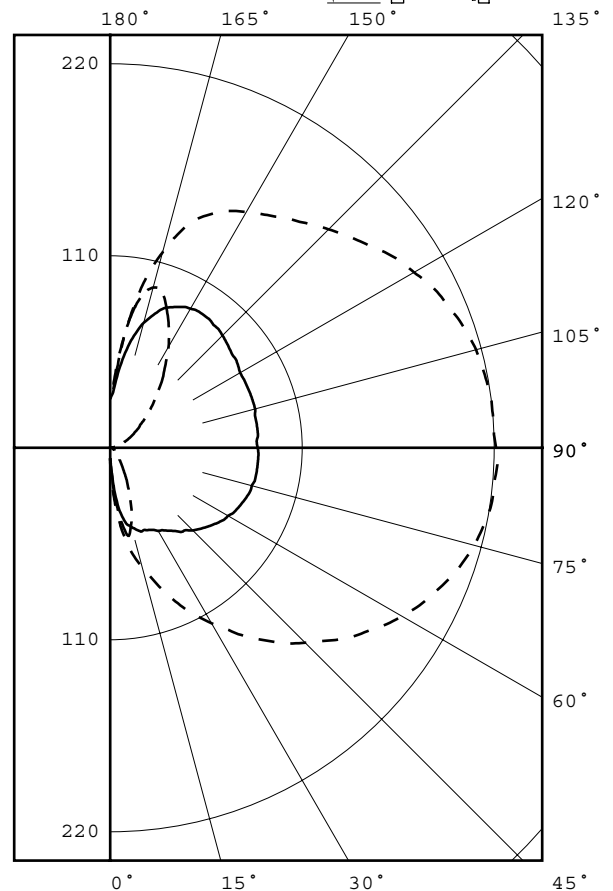
REPORT IS BASED ON 1800 LUMENS PER LAMP.



CANDELA DISTRIBUTION

FLUX

	0.0	45.0	90.0	135.0	180.0	
0	6	6	6	6	6	
5	32	31	22	19	25	3
15	71	68	47	41	46	15
25	102	86	52	30	24	27
35	131	109	58	19	11	40
45	158	130	67	15	6	57
55	182	149	75	14	4	74
65	202	164	81	13	2	89
75	216	174	84	13	2	100
85	221	178	85	12	1	105
90	221	177	84	11	0	
95	220	176	85	12	1	105
105	217	174	86	16	5	102
115	208	168	86	21	11	95
125	194	159	88	31	20	86
135	177	149	91	46	34	76
145	162	141	93	65	54	64
155	149	132	89	80	79	49
165	116	104	74	82	95	26
175	50	48	39	42	46	5
180	28	28	28	28	28	



LEGEND:
0-deg: - - - - -
90-deg: - - - - -
180-deg: - . - . - .

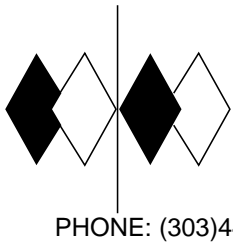
ZONAL LUMEN SUMMARY

ZONE	LUMENS	%LAMP	%FIXT
0- 30	45	2.5	4.1
0- 40	86	4.8	7.7
0- 60	216	12.0	19.3
0- 90	511	28.4	45.6
90-120	302	16.8	27.0
90-130	388	21.6	34.7
90-150	529	29.4	47.3
90-180	608	33.8	54.4
0-180	1119	62.2	100.0

TOTAL LUMINAIRE EFFICIENCY = 62.2 %

CIE TYPE - DIRECT-INDIRECT

Checked J. WATSON
Approved R. BEATTIE



itl boulder
THE LIGHT CENTER OF THE INDUSTRY SINCE 1955

INDEPENDENT TESTING LABORATORIES, INC.
 3386 LONGHORN ROAD, BOULDER, CO 80302 USA

PHONE: (303)442-1255 • FAX: (303)449-5274 • E-MAIL: itl@itlboulder.com • WEBSITE: www.itlboulder.com

REPORT NUMBER: ITL61321
 PREPARED FOR: SCOTT ARCHITECTURAL LIGHTING

DATE: 11/18/08

CANDELA DISTRIBUTION

	0.0	22.5	45.0	67.5	90.0	112.5	135.0	157.5	180.0
0.0	6	6	6	6	6	6	6	6	6
5.0	32	27	31	22	22	17	19	17	25
10.0	55	53	55	45	40	38	34	39	48
15.0	71	70	68	56	47	50	41	48	46
20.0	86	83	77	63	51	50	37	39	35
25.0	102	96	86	68	52	46	30	28	24
30.0	116	109	97	75	55	40	24	20	16
35.0	131	123	109	83	58	36	19	13	11
40.0	145	137	120	91	63	35	17	9	8
45.0	158	149	130	98	67	35	15	7	6
50.0	171	161	140	105	71	37	14	5	5
55.0	182	172	149	112	75	38	14	4	4
60.0	193	182	157	118	78	39	13	3	3
65.0	202	191	164	123	81	40	13	3	2
70.0	210	199	170	127	83	41	13	2	2
75.0	216	205	174	130	84	42	13	2	2
80.0	220	209	177	133	85	42	12	1	1
85.0	221	210	178	133	85	42	12	1	1
90.0	221	209	177	132	84	41	11	0	0
95.0	220	208	176	132	85	42	12	2	1
100.0	219	207	176	132	85	43	14	3	3
105.0	217	204	174	131	86	45	16	6	5
110.0	213	201	172	129	86	46	18	8	8
115.0	208	196	168	128	86	49	21	12	11
120.0	201	190	164	126	86	53	25	16	15
125.0	194	183	159	123	88	59	31	21	20
130.0	185	175	153	122	89	65	38	29	26
135.0	177	168	149	121	91	72	46	37	34
140.0	169	161	144	119	92	78	56	48	43
145.0	162	156	141	117	93	84	65	59	54
150.0	156	151	137	114	92	89	73	71	67
155.0	149	144	132	109	89	91	80	83	79
160.0	138	132	122	99	84	90	84	92	91
165.0	116	109	104	86	74	79	82	90	95
170.0	86	79	80	64	59	59	66	71	82
175.0	50	45	48	37	39	35	42	40	46
180.0	28	28	28	28	28	28	28	28	28



INDEPENDENT TESTING LABORATORIES, INC.
3386 LONGHORN ROAD, BOULDER, CO 80302 USA

PHONE: (303)442-1255 • FAX: (303)449-5274 • E-MAIL: itl@itlboulder.com • WEBSITE: www.itlboulder.com

REPORT NUMBER: ITL61321
PREPARED FOR: SCOTT ARCHITECTURAL LIGHTING

DATE: 11/18/08

ZONAL LUMEN SUMMARY

0- 5	0.
5- 10	2.
10- 15	6.
15- 20	9.
20- 25	12.
25- 30	15.
30- 35	18.
35- 40	22.
40- 45	26.
45- 50	30.
50- 55	35.
55- 60	39.
60- 65	43.
65- 70	46.
70- 75	49.
75- 80	51.
80- 85	52.
85- 90	53.
90- 95	52.
95-100	52.
100-105	52.
105-110	50.
110-115	49.
115-120	47.
120-125	44.
125-130	42.
130-135	40.
135-140	37.
140-145	34.
145-150	31.
150-155	27.
155-160	22.
160-165	16.
165-170	10.
170-175	4.
175-180	1.



INDEPENDENT TESTING LABORATORIES, INC.
 3386 LONGHORN ROAD, BOULDER, CO 80302 USA

PHONE: (303)442-1255 • FAX: (303)449-5274 • E-MAIL: itl@itlboulder.com • WEBSITE: www.itlboulder.com

REPORT NUMBER: ITL61321

DATE: 11/18/08

PREPARED FOR: SCOTT ARCHITECTURAL LIGHTING

COEFFICIENTS OF UTILIZATION - ZONAL CAVITY METHOD

EFFECTIVE FLOOR CAVITY REFLECTANCE 0.20

RC	80				70				50			30			10			0
	70	50	30	10	70	50	30	10	50	30	10	50	30	10	50	30	10	
0	66	66	66	66	60	60	60	60	50	50	50	41	41	41	32	32	32	28
1	57	53	50	47	52	49	45	43	40	37	35	31	30	28	24	23	21	18
2	51	45	40	36	46	41	36	33	33	30	27	26	23	21	19	18	16	13
3	46	39	33	28	41	35	30	26	28	24	21	22	19	17	16	14	12	9
4	41	34	28	23	37	30	25	21	25	21	17	19	16	14	14	12	10	7
5	38	29	24	19	34	27	22	18	22	18	14	17	14	11	12	10	8	6
6	35	26	20	16	31	24	19	15	19	15	12	15	12	10	11	9	7	5
7	32	23	18	14	29	21	16	13	17	13	10	13	10	8	10	8	6	4
8	29	21	16	12	27	19	14	11	16	12	9	12	9	7	9	7	5	3
9	27	19	14	11	25	17	13	10	14	11	8	11	8	6	8	6	4	3
10	25	17	13	9	23	16	12	9	13	9	7	10	7	5	8	5	4	3

ALL CANDELA, LUMENS, LUMINANCE, COEFFICIENT OF UTILIZATION AND VCP VALUES IN THIS REPORT ARE BASED ON RELATIVE PHOTOMETRY WHICH ASSUMES A BALLAST FACTOR OF 1.000. ANY CALCULATIONS PREPARED FROM THESE DATA SHOULD INCLUDE AN APPROPRIATE BALLAST FACTOR.

NOTE: THE ZONAL CAVITY CALCULATION TECHNIQUE IS ACCURATE WHEN LUMINAIRES WITH SYMMETRIC CANDELA DISTRIBUTIONS ARE EMPLOYED AND WHEN THE LUMINAIRES ARE LOCATED SYMMETRICALLY THROUGHOUT THE ROOM. THIS UNIT HAS SPECIAL CHARACTERISTICS AND THEREFORE THESE COEFFICIENTS SHOULD BE USED WITH CAUTION.